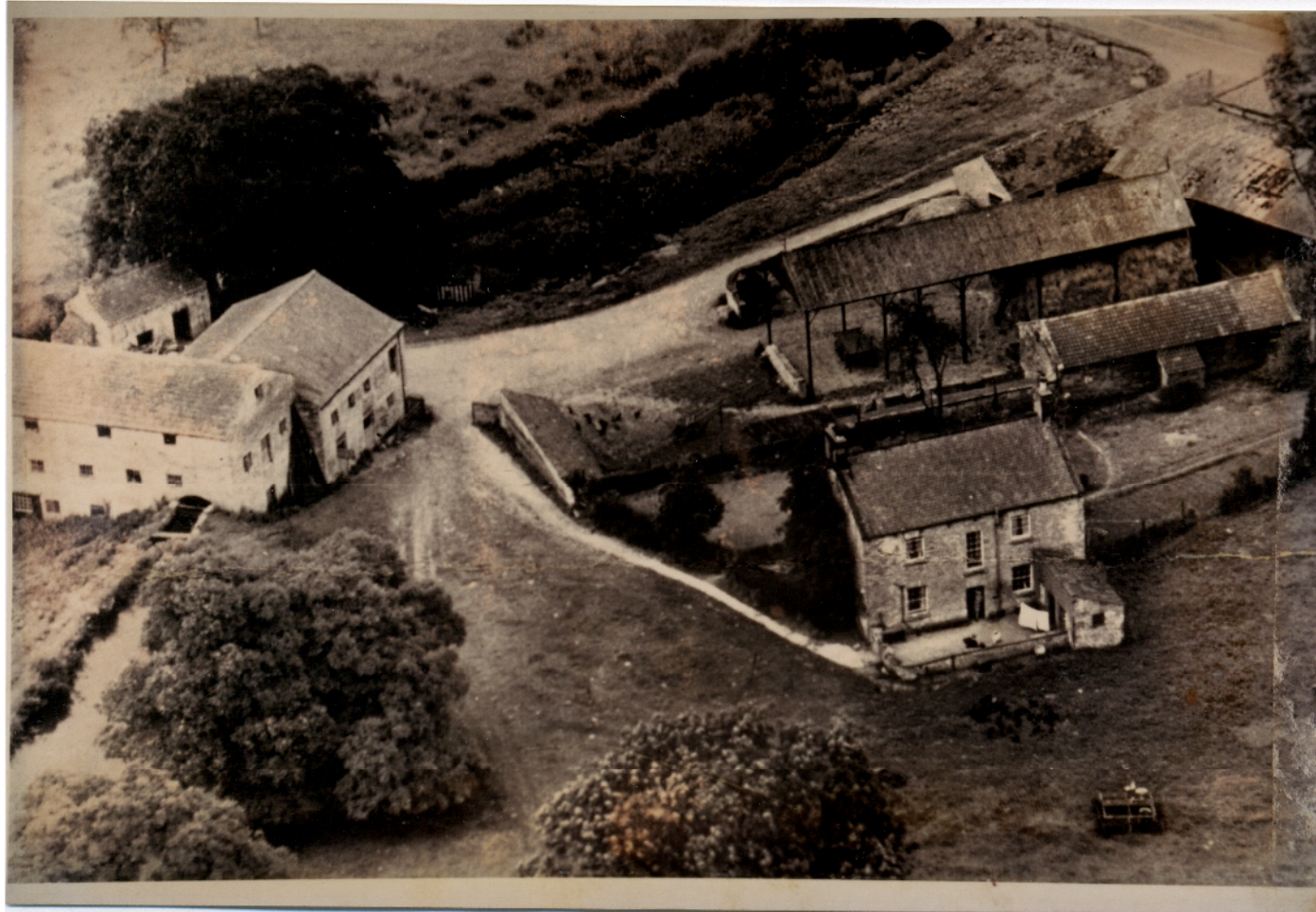


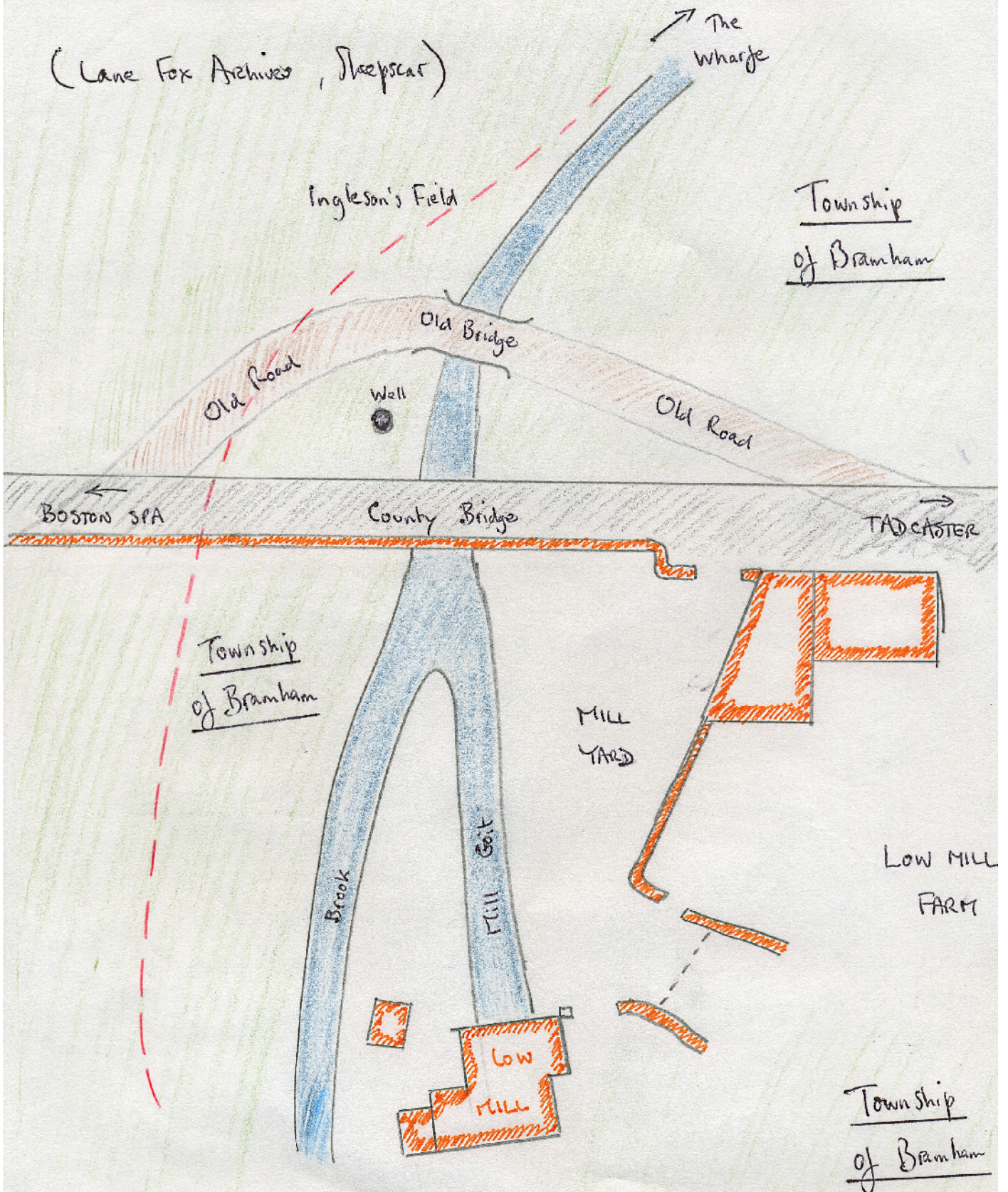
Low Mills Farm, High St., Boston Spa



The northernmost part of the Bramham Parish , Low Mills Farm lies alongside the Beck , which forms the parish boundary up to the river Wharfe. Much older than its appearance on the 1817 map , it was long ago the site of a flax mill , though the 1848 first OD map indicates both corn and paper mills on the site. Records were lost in a fire at the Bramham Park Estate Office. Currently the farm is being worked by a third generation of the Umpleby family , Elizabeth [nee Umpleby] and Tim Clayton having taken over in 1998 from her parents , who moved next door to Orchard Cottage --- over the Beck and so into Boston Spa. The Umpleby stewardship began in 1929.

1850 Sketch of Low Mill
& Bridge

(Lane Fox Archives, Sheepscar)





Low Mills Farm

2000



The northern tip of
Bramham cum Oglethorpe
parish. This spot gives
us the Ebor Way, and
the river Wharfe as part
of our parish.